



PORT
ARTHUR
HISTORIC
SITES



WEDDINGS, CONFERENCES & EVENTS



WEDDINGS, CONFERENCES & EVENTS



Location

Accessible by land or sea, Port Arthur Historic Site is situated only 95 km or 1.5 hours from Hobart CBD. Enjoy serene beaches and stunning coastal views as well as geological wonders along the way to Australia's premier convict settlement.

Facilities

The Historic Site covers more than 100 acres of grounds, gardens, barbeque facilities, self-guided trails, restored period houses and convict ruins. Meeting and event facilities include indoor and outdoor venues described in this document (subject to availability) include presentation equipment (subject to requirements). Visitor Guides are available in Japanese, Chinese, German and French. Transport is offered for patrons of restricted mobility around site.

Activities

Site entry includes an introductory guided tour, harbour cruise, access to the Museum, convict study centre and the 'Lottery of Life' interpretation gallery. Additional tours of the Isle of the Dead and Point Puer may be included with the harbour cruise. Audio tour players are available for hire at the Visitor Centre.

Catering

Catering options are available for all venues and events at Port Arthur Historic Site. If you are interested in having catering provided at your event, please contact us to request our available Catering Options and/or Beverage Options.

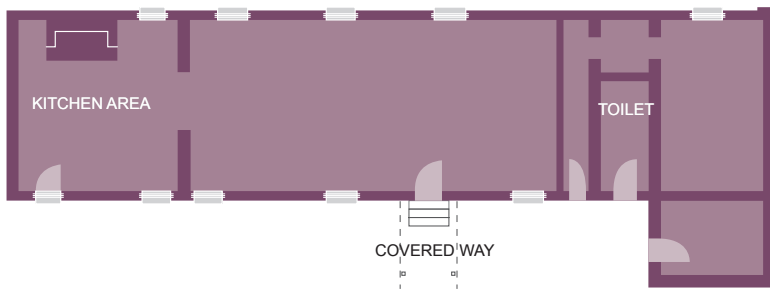


JUNIOR MEDICAL OFFICER'S DINING HALL



WHERE THE PAST & PRESENT COLLIDE

One of our most popular conference venues, this open house museum provides a comfortable private alternative to the average board room. Conference equipment transport this 19th century hall into the 21st century. Kitchen facilities are attached providing for seamless catering without disturbing conference activities.



Specifications

JMO	
Clear Area	60.0sqm (plus kitchen - 20sqm)
Clear Height	3.0m
Length	12.0m
Width	5.0m
Max seated	44 PAX
Max standing	60 PAX



THE MUSEUM & ASYLUM



ATMOSPHERE

The Museum is an excellent venue for group luncheons, gourmet barbeques and wedding receptions. The building stands at the end of the guided tour and across site from the visitor centre and includes a convict study centre and a collection of convict artifacts. Outdoor, undercover seating is available as well as access to the Asylum for larger groups.

Specifications

Museum Coffee Shop

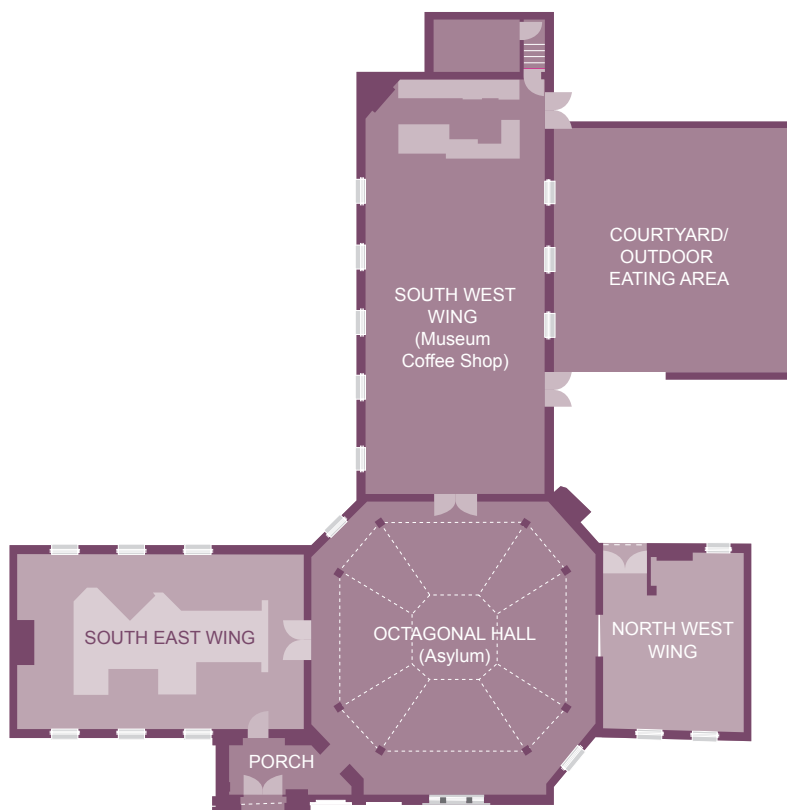
Clear Area	108.75sqm
Clear Height	4.30m
Length	14.5m
Width	7.5m
Max seated	80 PAX
Max standing	120 PAX

Museum Coffee Shop Courtyard

Clear Area	142.50sqm
Clear Height	3.30m to 2.60m gradient
Length	15.0m
Width	9.5m
Max seated	65 PAX
Max standing	85 PAX

Asylum Hall

Clear Area	134.0sqm
Clear Height	4.30m
Length	12.50m
Width	12.0m
Max seated	100 PAX
Max standing	150 PAX





The Port Arthur Historic Site Management Authority Act

All visitors and their activities within the Port Arthur Historic Sites are subject to and must comply with the Port Arthur Historic Site Management Authority Act 1987.

The Act details the Authority's powers and responsibilities of visitors in relation to standards of behaviour, care and management of the Sites.

The complete Act is available from www.thelaw.tas.gov.au

PAHSMA retains the right to deny access and/or eject visitors who are being a public nuisance, acting recklessly or failing to observe directions from signage or PAHSMA staff.

PAHSMA, its employees and agents shall not be liable, either in contract or for negligence, for any injury loss or damage, whether caused by negligence or otherwise, arising out of or caused by the condition of the land, any building or structure within the site, any natural or other hazard, or by any activity on the site.

Children must be accompanied by an adult who shall be solely responsible for their care and conduct whilst on Site.

www.portarthur.org.au

Arthur Highway
Port Arthur Tasmania
Tel: 1800 659 101
reservations@portarthur.org.au



PORT
ARTHUR
HISTORIC
SITES